

Wiley Digital Archives

ACCESS TO UNIQUE PRIMARY SOURCES

Exclusively for students, academics, and researchers at the University of Cape Town

Available now at app.wileydigitalarchives.com

Following the devastating loss of some special collections at the Jagger Library, Wiley is granting temporary access to the archives of the Royal Geographical Society (with IBG) and the Royal Anthropological Institute of Great Britain and Ireland.

Wiley Digital Archives is a purpose built digital platform that provides access to **unique** and **vast** collections of **rare**, **historical primary source material** from prestigious societies. With content suitable for all disciplines, the platform brings together **scientific, cultural, and geopolitical history** in one accessible place.

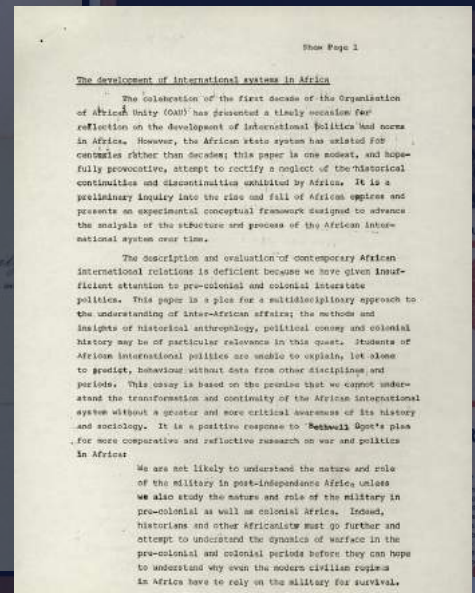
The archives of the Royal Geographical Society (with IBG) and the Royal Anthropological Institute of Great Britain and Ireland also contain valuable materials pertaining to Africa and African history.

We hope this online support helps students and researchers to access historical records and resources as you work to rebuild your library.

Examples from the archives:



"Plan of Cape Town, South Africa." Map, 1911. Wiley Digital Archives: Royal Geographical Society (with IBG). Accessed 14 May, 2021.



The Development of International Systems in Africa, Timothy M. Shaw, William Buller Fagg Collection, Box 67, December 9 - 19, 1973. The Royal Anthropological Institute of Great Britain and Ireland.

To start using the archives, access them at app.wileydigitalarchives.com

For training and on how to use the platform, visit secure.wiley.com/wiley-research-training-wda

WILEY